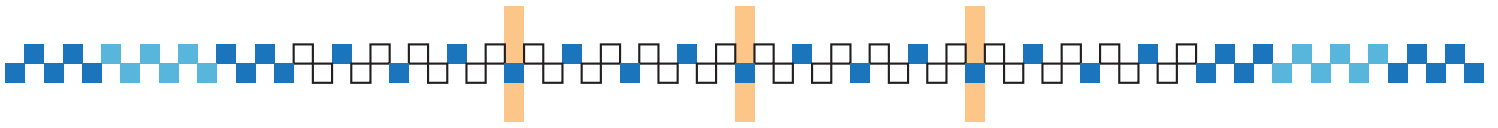


Norwegian Star Inkle Pattern - Sally Orgren

Warping Diagram



You will need 39 string heddles.

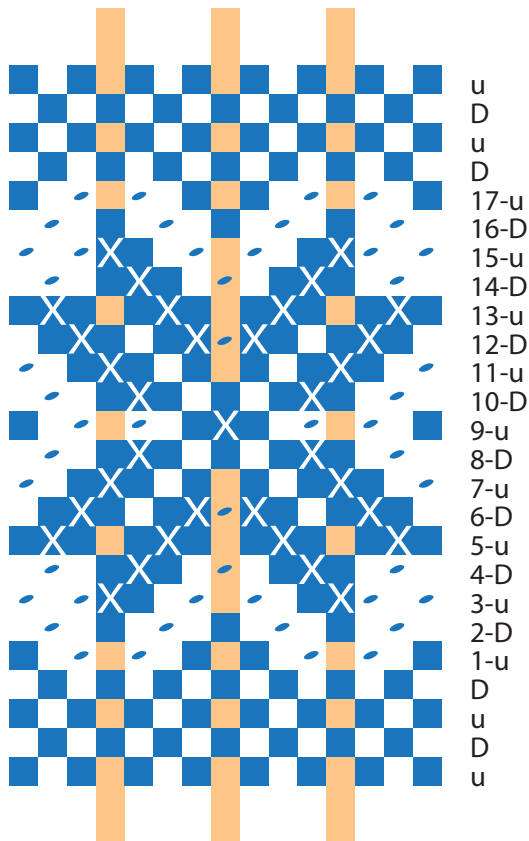
Use differently-colored string heddles for the 3 warps indicated (shown as orange).

This helps you track your pattern easily when treading.

There are 77 total warps. (12 light blue, 33 dark blue, 32 white.)

There are 15 pattern warps (dark blue) for the pickup design in the center of the band.

Treading Diagram



Treading Instructions for pattern pick-up

Only the central pick-up design is shown at left.

There are 17 picks in this pattern starting from the bottom. As it is a symmetrical pattern, you may also start from the top and work down.

The key to the treading:

“u” = for this row, the warps are lifted UP

“D” = for this row, the warps are pressed DOWN.

The key to the pick-up:

“●” = the pattern thread which appears here needs to be pushed DOWN

“X” = the pattern thread needs to be lifted UP.

